

# **Getting to the Finish Line: Unique Postsecondary Barriers Adult Students Face**

March 15, 2018



# Welcome!



**Kathy McDonald, MBA**

Assistant Director of Network Partnerships

[kmcdonald@FloridaCollegeAccess.org](mailto:kmcdonald@FloridaCollegeAccess.org)

# Today's Guest Presenters



**Dr. Michelle Horton**  
Director

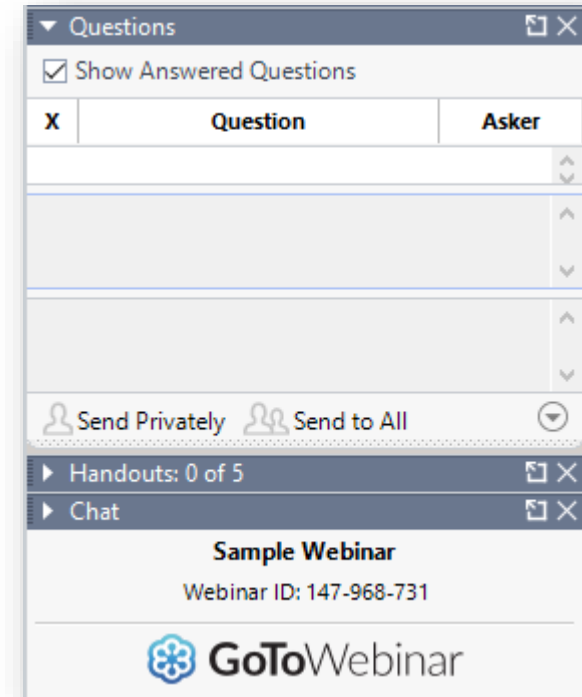
Complete  Florida  
University of West Florida  
Innovation Institute



**Jehan Clark**  
Complete Florida graduate,  
Program Manager

# Questions & Conversation

- Submit your questions in the question box
- Share on social media
  - @FLCollegeAccess
  - #FCAN
  - #AdultLearners
  - #CompleteFlorida



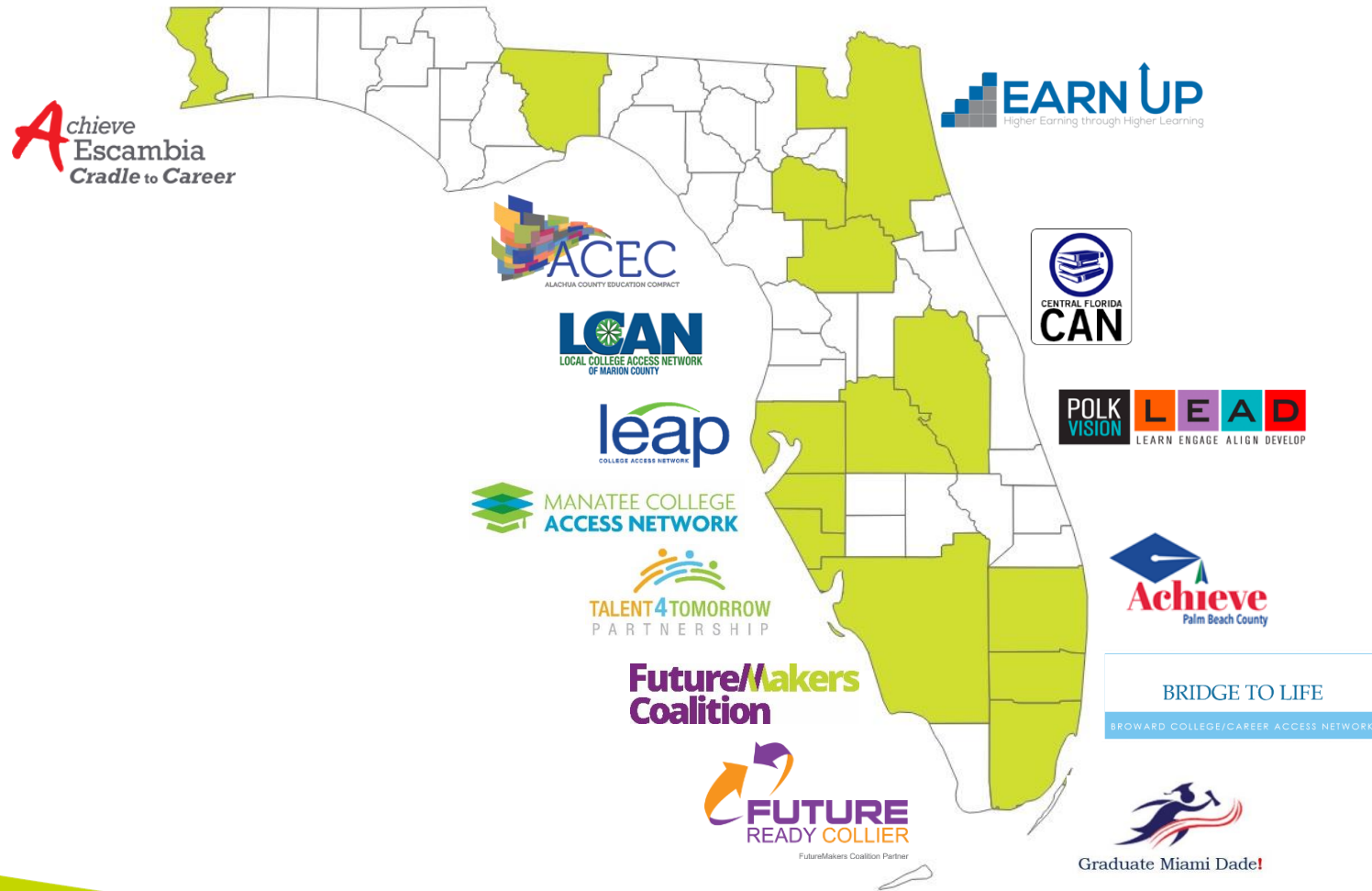
*This webinar is being recorded; all materials will be available within a week of recording*

# Florida College Access Network

**Our mission:** To create and strengthen a statewide network that catalyzes and supports communities to improve college and career readiness, access, and completion for all students

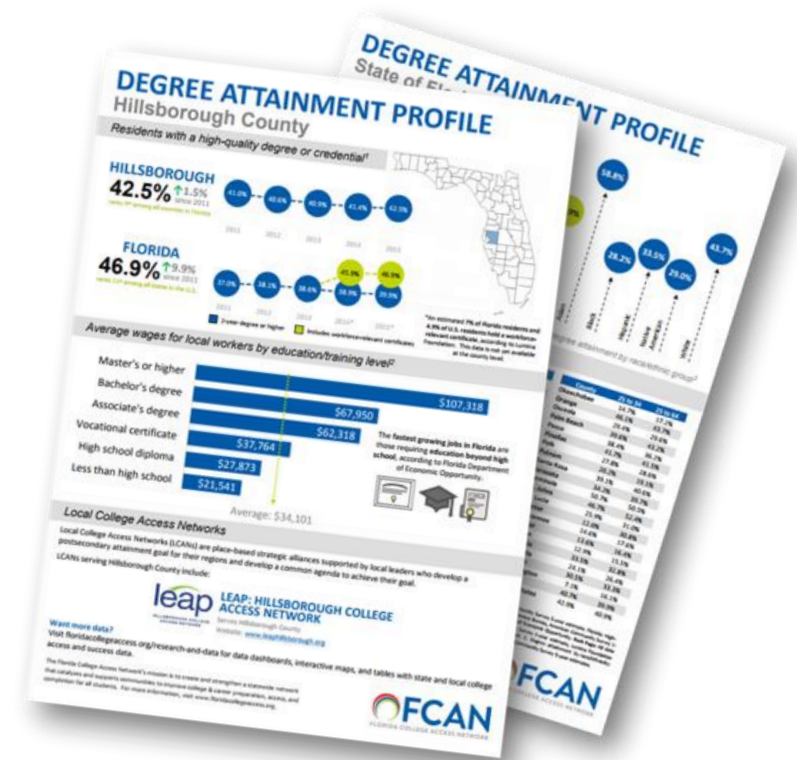
**Our vision:** At least 60% of working-age Floridians will hold a high-quality postsecondary degree or credential by the year 2025

# Local College Access Networks in Florida



# FCAN's Research, Data, & Policy Work

- Produce student-centered research & policy analysis
- Clearinghouse for college and career readiness, access and completion data
- Develop local, state and national partnerships and policy alignment around degree attainment



# College Ready Florida



FLORIDA  
FAF\$A  
*CHALLENGE*

FLORIDA  
COLLEGE  
DECISION  
DAY



# Unique Challenges Adult Students Face



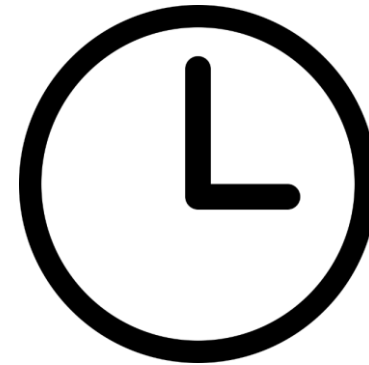
# Adults make up a large segment of postsecondary students

- 37% of college students are age 25+
- 2.2M Florida adults have some college credit but no credential
- $\frac{3}{4}$  of today's college students are juggling some combination of work, school and family while commuting to class



# Unique challenges adults must face returning to college

- Uneven course credit history
- Money
- Time



# Getting to the Finish Line

*Barriers unique to the adult learner*





# Presenters



Michelle Horton, Ed.D.  
Director, Complete Florida  
UWF Innovation Institute






Jehan Clark- Complete Florida graduate  
Program Manager, Complete Florida  
UWF Innovation Institute



# Who we are



**14 partner schools throughout the state.**

-  5 PUBLIC UNIVERSITIES
-  5 PUBLIC COLLEGES
-  4 PRIVATE UNIVERSITIES





## Concierge-based coaching.

**Complete Florida Personal Coaches.** After joining Complete Florida, students are partnered with a Personal Coach.







**There are 2.2 million working age adults in Florida who have started college but haven't finished.**

### The Adult Learner

The majority of Complete Florida students are working adults, many with families, so their time and their resources are precious.



# 40%

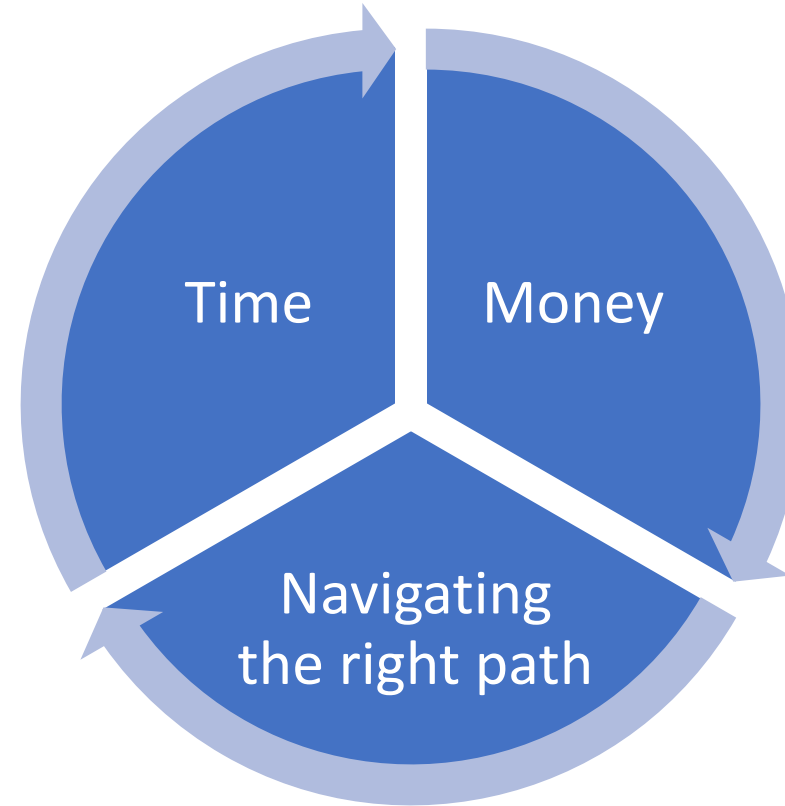
**of all U.S. college students are adults returning to college.**

SOURCE: NATIONAL CENTER FOR EDUCATION STATISTICS

# Top Barriers for Adult Learners



# Barriers





## Time

“The hardest adjustment of working, taking care of family and attending school at the same time was time management. The flexibility of online classes offered me the chance to complete my bachelor's degree.”

-- Kelly



## Money

“Since I am a bit further along in life, incurring a massive student debt is not appealing to me. Therefore, any funds that I can receive to offset any potential need for loans is much appreciated. I can complete my education with peace of mind, not having to worry about a huge bill at the end of my self-improvement journey.”

-- Shaneka



## Navigating the right path

"When I did my own research, I was having trouble finding a university that would accept my business classes because the credits were more than 10 years old. I would never have known anything about an Interdisciplinary Studies degree if my coach hadn't pointed me in that direction."

-- James



## What people are saying.

**Success stories.** People have many reasons for wanting to finish their degree - to get a better job, be a good example for their kids or to just check it off their bucket list.

*"I was ready for a change but I didn't know where to start. Now I have a career plan and I am headed back to college to finish my degree."*

Lauren

*"I felt like life was passing me by. But now I know what I want to do and Complete Florida is helping me do it."*

Patrick



# Removing the Barriers





# Flexibility

- Accelerated courses
- Self-paced learning
- Online programs



# Affordability

- Transfer and alternative credits
- Open Educational Resources
- Accessibility of Scholarships



# Navigation

- Assessment of options
- Dedicated intake advising
- Well-defined path to completion

# How everyone can help



# Creating Support Networks

(Building strategic partnerships.)

Working with institutions, employers and industry organizations to create partnerships that focus on leveraging resources and removing barriers for returning adult students.

**COMPLETE  
COLLEGE  
AMERICA**

**FLORIDA**  
COLLEGE ACCESS NETWORK

**THE GRADUATE!  
NETWORK.**



# Reaching the Returning Adult Student

(Marketing partnerships.)

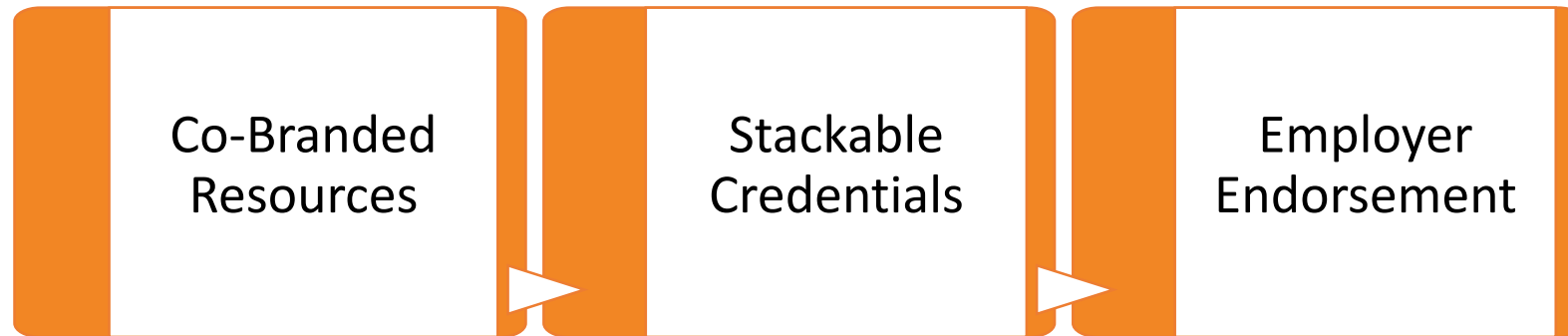
Recruiting with partners expands outreach to serve more students where they are.



# Fourteen Touches

(Trusted sources.)

Returning adult students require more initial interactions.





Questions?



Michelle Horton, Ed.D.  
Director, Complete Florida  
[michelle@completeflorida.org](mailto:michelle@completeflorida.org)

Jehan Clark  
Program Manager, Complete Florida  
[jehan@completeflorida.org](mailto:jehan@completeflorida.org)



# Conclusion



# Save the Date!

## 2018 Florida College Access Network Summit

May 10<sup>th</sup> – 11<sup>th</sup>

Hyatt Regency Orlando

*Featuring sessions on college access, affordability, success and completion*

*Register at [FCANsummit.org](http://FCANsummit.org)*



# Join us for our next webinar



**\$500 for College Decision  
Day: How Better Make Room  
is Helping Schools  
Celebrate Students**

March 29<sup>th</sup>, 1-2 pm Eastern

*Register at  
[FloridaCollegeAccess.org/events](https://FloridaCollegeAccess.org/events)*