

Estamos Aquí: Building Momentum & Capacity to Serve the Growing Latinx Population in Central Florida

October 15, 2020

Welcome!



Kathy McDonald, MBA

Assistant Director for Network Partnerships

Florida College Access Network

kmcdonald@FloridaCollegeAccess.org



@kathy_mcdonald

Guest Presenter

Dr. Fernando Rivera

Professor and Director
UCF Puerto Rico Research Hub
University of Central Florida



Guest Presenter

Mitzy González

Program Manager
Coalition of Urban Serving Universities
Association of Public and Land-Grant
Universities



Guest Presenter

Zoé Colón

Community Partnerships Manager
Parramore Education &
Innovation District
University of Central Florida



Questions & Conversation

- Submit your questions in the box
- Share on social media
Twitter: @FLCollegeAccess
#FCAN

This webinar is being recorded; all materials will be available within a week of recording



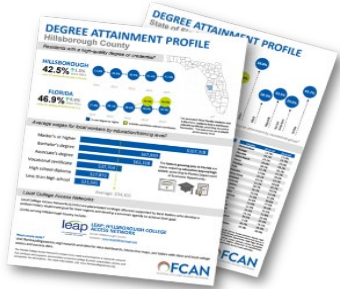
Our mission:

We lead the collaborative movement to ensure every Floridian achieves an education beyond high school and a rewarding career.

Our vision:

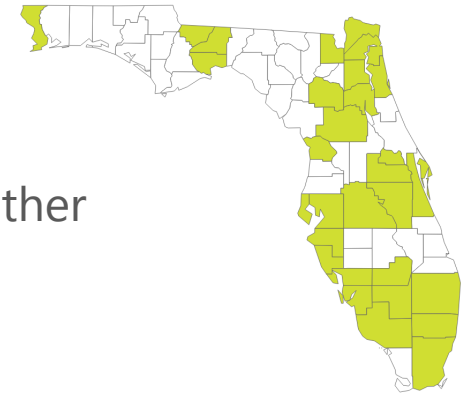
A Florida working together, where education is the pathway to economic mobility for all.

FCAN's Work



Research and Data FCAN publishes research and data on evidence-based practices and policy opportunities to strengthen Florida's talent pool.

Local college access networks (LCANs) LCANs represent 82% of the state's population. These organizations are made up of community leaders who come together to create solutions and partnerships to support local talent development.



**COLLEGE
READY
FLORIDA**

Statewide Initiatives FCAN coordinates 4 College Ready Florida initiatives that support students in continuing their education after high school.

7 Conditions for Success

Opportunity for everyone: To build a talent-strong economy, all Floridians need access to a postsecondary education and the supports to complete it.

Clear information and guidance: Students and families need exposure and counseling early and often to make informed decisions about their futures.

Affordable: Postsecondary education needs to be within everyone's financial reach, regardless of household income or life circumstances.

Multiple pathways to success: Floridians benefit from multiple learning opportunities for academic achievement and career advancement.

Lifelong learning: No degree or credential is "one and done;" Floridians need to prepare for career changes through continuous learning.

Effective use of data: Transparent access to data on education and economic outcomes, especially for Florida's diverse populations, helps achieve our goals.

Community collaboration: When community partners work together toward a shared vision, they remove barriers, build a robust workforce, and improve the quality of life for their regions.

Poll: Is Latinx student success currently an institutional priority?

Introduction

Latinos in Florida

26%

Florida population that is Latino

32%

Nearly a third of Florida K-12 students are Latino.

76%

Growth in the Puerto Rican population in Florida between 2000 and 2010.

Sources:
Excelencia in Education;
Hispanic Federation

Florida Latinos in higher education

Graduation rates:

- **60%:** Graduation rates for Latinos in Florida at 2-year institutions are significantly higher than the national average (33%)
- **35% vs. 44%:** Statewide, Latinos trail in associate or higher degree completion vs. their white peers

Source:
Excelencia in Education

Fernando I. Rivera, PhD
University of Central Florida
Director, Puerto Rico Research Hub
Professor-Department of Sociology

**Estamos Aqui:
Building Momentum & Capacity to
Serve the Growing Latinx
Population in Central Florida**



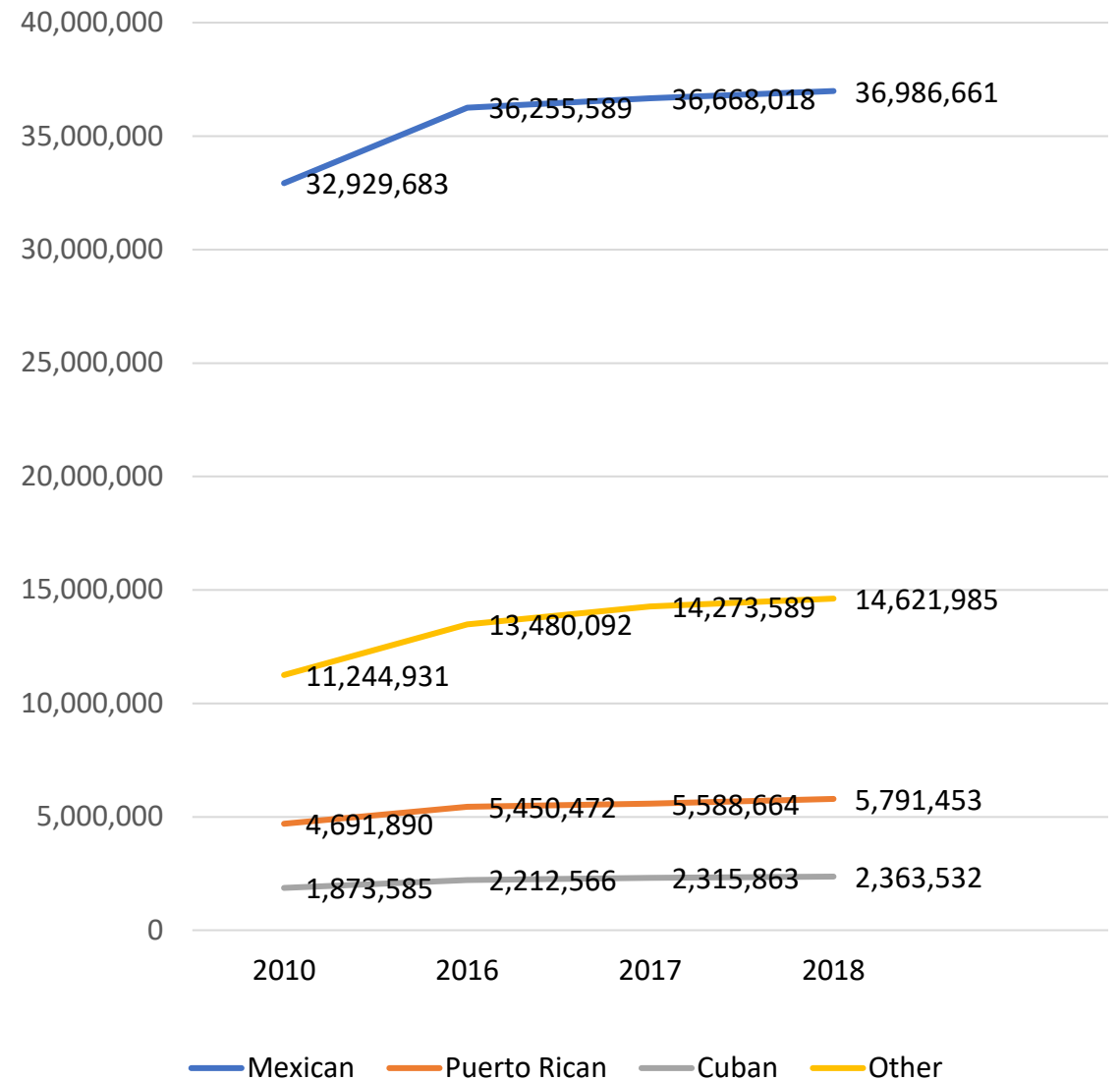


Global Perspective

Demographics

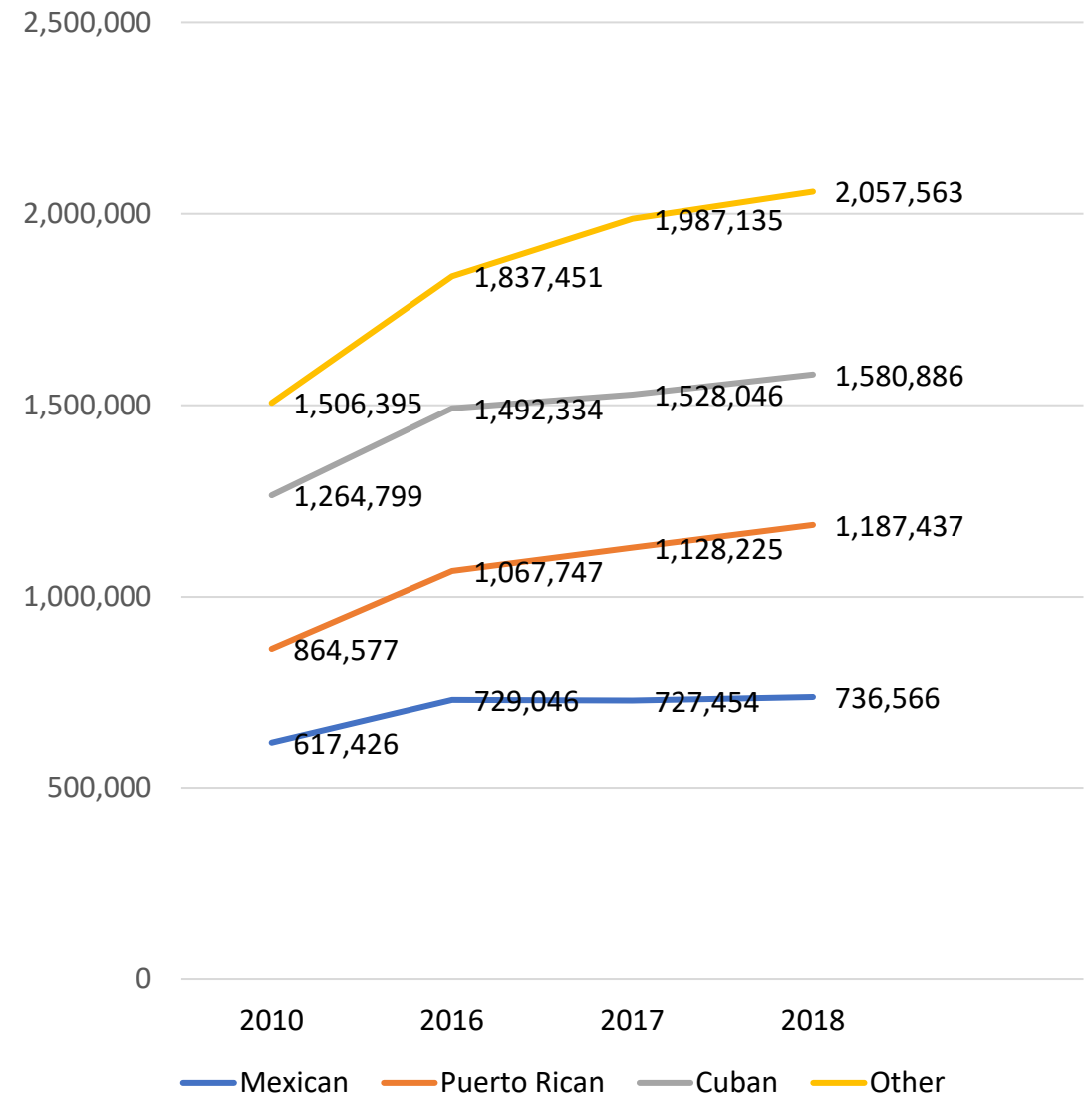
Latinx Population Profile (USA)

- 2010, 2016-2018 American Community Survey, 1-Year Estimates

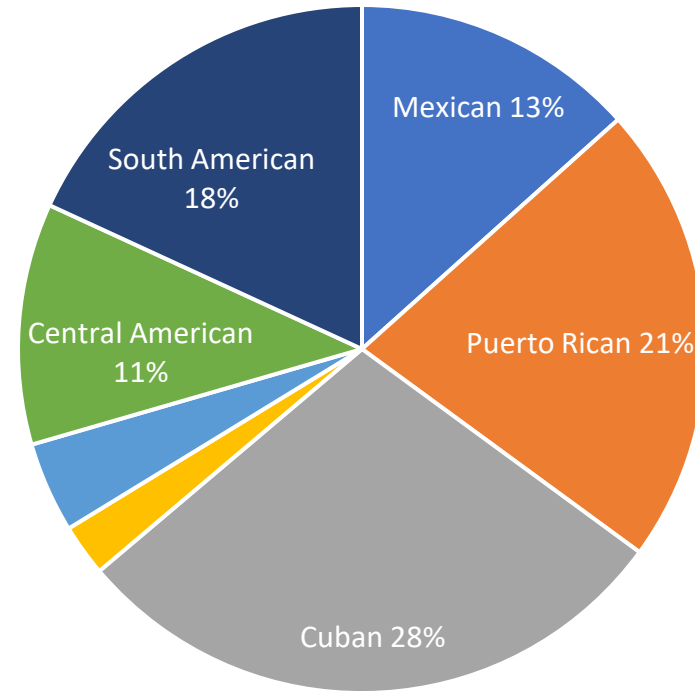


Latinx Population Profile (Florida)

- 2010, 2016-2018 American Community Survey, 1-Year Estimates



Latinx Population in Florida, 2018

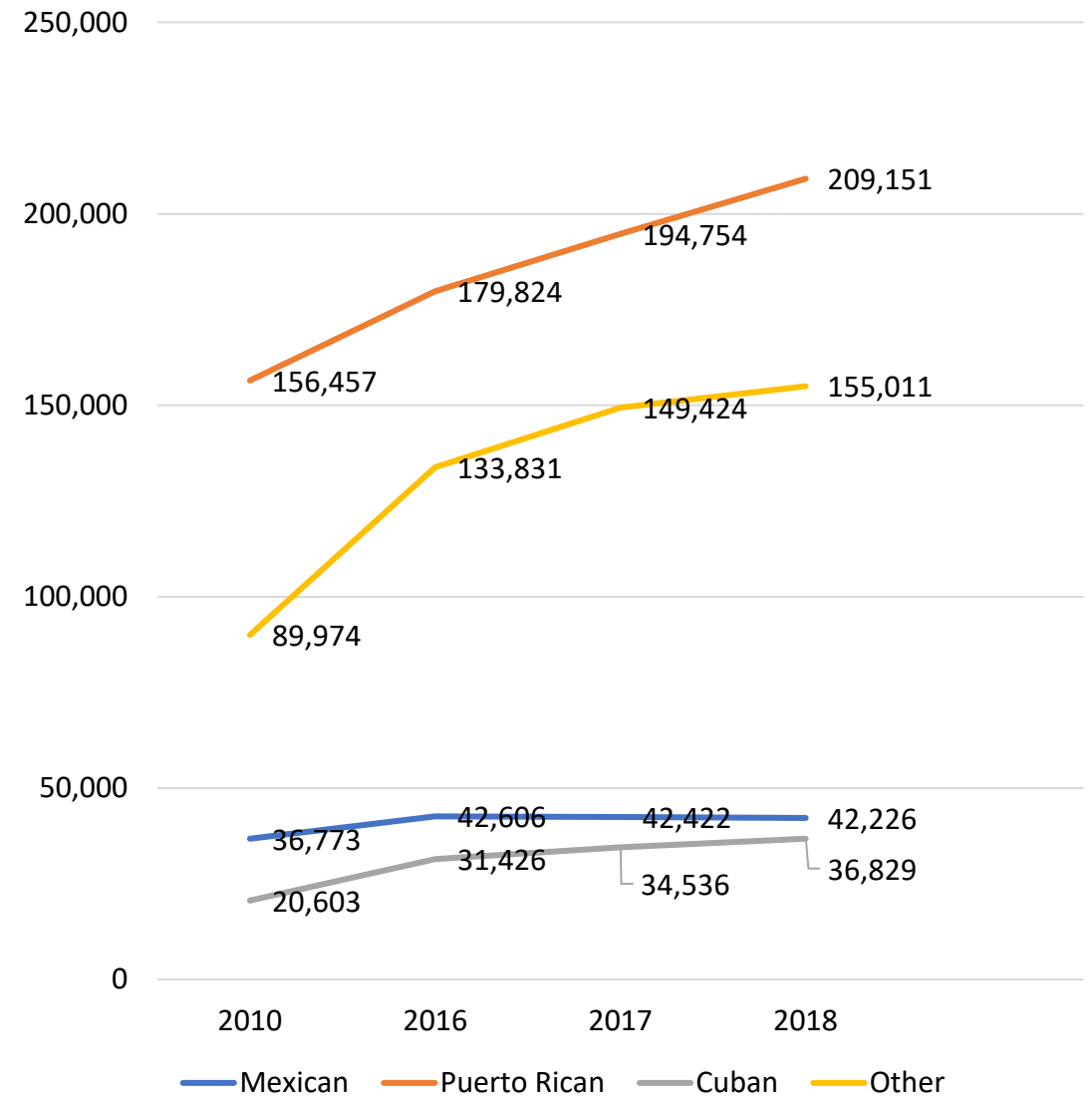


Source: U.S. Census Bureau, 2018 American Community Survey 1-year estimates.

Mexican	Puerto Rican	Cuban	Other	Dominican	Central American	South American	Total
736,566	1,187,437	1,580,886	136,529	237,844	624,241	1,000,542	5,562,452

Latinx Population Profile (Orange)

- 2010, 2016-2018 American Community Survey, 1-Year Estimates



Latinx Influence in Central Florida (K-12)

Hispanic Influence in Central Florida

Hispanic Population in Orange County

- 446,334 (1,380,645) = 32% ACS 2018

Florida Department of Education

Enrollment of Hispanics:

Orange County

2015-16=38.4%

2016-17=39.9%

2017-18=41.2%

2018-19=42.6%

2019-20=43.1%

Osceola County

2015-16=59.1%

2016-17=60.0%

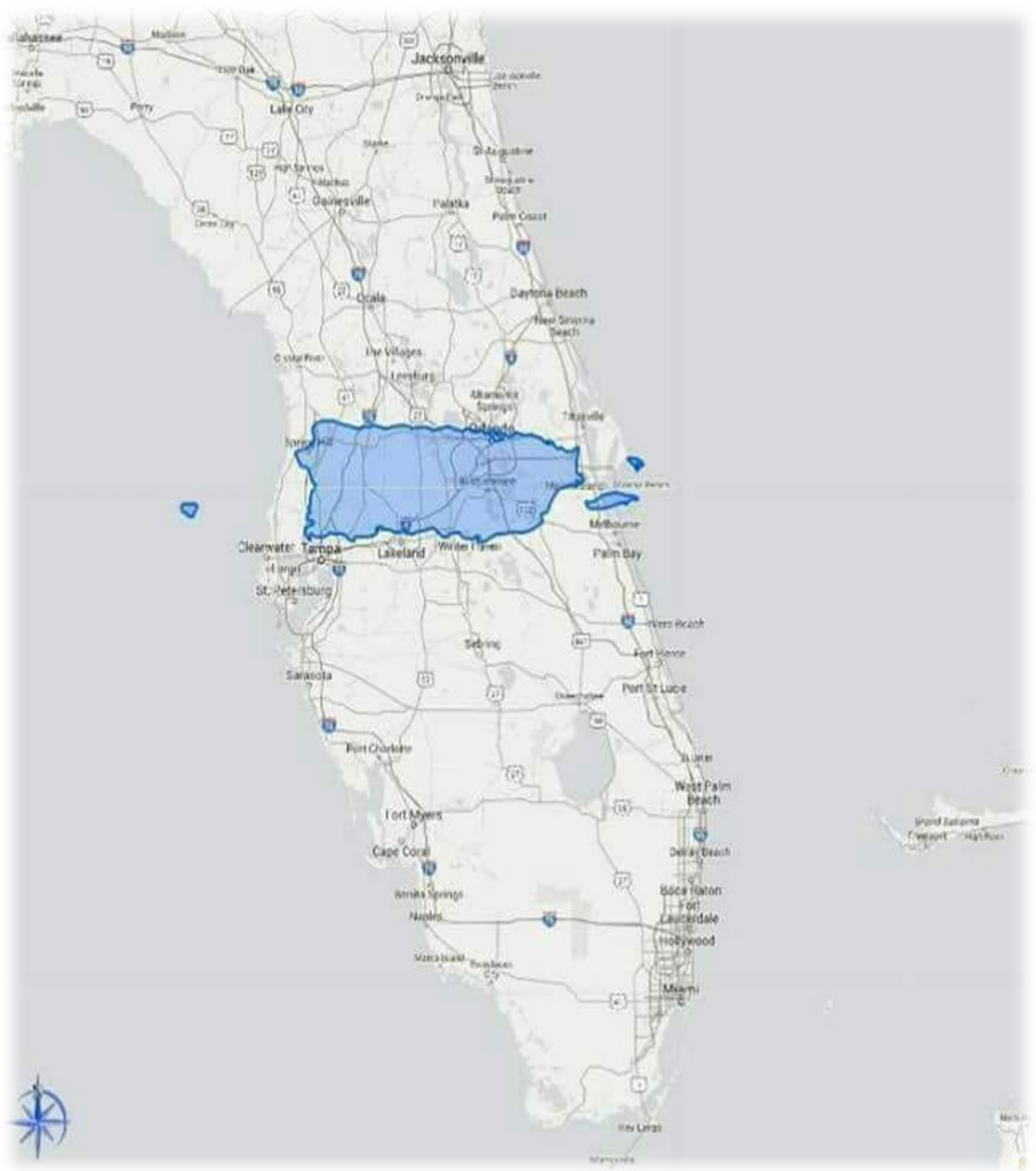
2017-18=60.5%

2018-19=61.6%

2019-20=61.6%



Hurricane Maria



Source: Alerta Nacional PR

Puerto Rico Population Estimates (2000-2018)

- Source:

<https://www.census.gov/quickfacts/PR>

2000	2018	%
3,725,789	3,195,154	-14.3

Projected Resettlement by Florida County of Puerto Ricans and Virgin Islanders from Hurricane Maria Impacts, July 2018

- Courtesy Dr. Emrich-UCF School of Public Administration

County (Top 10)	Distribution of Estimated Population
Orange	15,156 (28.5%)
Osceola	7,879 (14.8%)
Hillsborough	4,288 (8.9%)
Miami-Dade	4,240 (8%)
Polk	3,739 (7.5%)
Broward	3,364 (6.3%)
Seminole	1,779 (3.3%)
Palm Beach	1,670 (3.1%)
Volusia	1,465 (2.7%)
Lake	1,284 (2.4%)
Total estimate for all Counties	53,000

- <https://centopr.hunter.cuny.edu/research/data-center/research-briefs/enduring-disasters-puerto-rico-three-years-after-hurricane>

Table 2. Puerto Rican Population by States, 2018-2019

	2018	2019	Change	Percent Change (%)
Florida	1,187,437	1,190,891	3,454	0%
New York	1,070,071	1,096,823	26,752	3%
Pennsylvania	477,312	493,255	15,943	3%
New Jersey	488,181	455,615	-32,566	-7%
Massachusetts	329,713	340,893	11,180	3%
Connecticut	298,006	302,027	4,021	1%
Texas	214,765	239,157	24,392	11%
California	226,738	226,314	-424	0%
Illinois	206,543	207,109	566	0%
Ohio	137,104	130,700	-6,404	-5%

Source: U.S. Census Bureau, 2018 - 2019 American Community Survey, 1-year estimates.

UCF Response

- Admissions waived \$30 Application Fee
- Board of Trustees extended the in state tuition waiver till 2023

	Applications	Admitted	New Admits Enrolled	Total Enrolled
Spring 2018	1135	405	199	199
Summer 2018	47	13	13	142
Fall 2018	422	91	62	240



Puerto Rican Student Association

The Puerto Rican Student Association serves as liaison between the UCF and Puerto Rican community to support and unite Puerto Rican students at UCF. PRSA is committed with providing social, cultural, and educational awareness among the UCF community about the Puerto Rican people.

The goal of PRSA is to unite the Puerto Rican students at UCF to help and support each other throughout their educational journey at UCF. Also, PRSA, as UCF, stands for opportunity. This organization will make sure that its members excel at UCF by providing them proper leadership and personal growth experiences. PRSA will offer a safe, comfortable, and judging free environment for Puerto Rican students to come together and smoothly adjust to the campus life. Discussions about personal experiences and cultural diversity will serve as the primary source for developing harmony and friendship among all of its members and the rest of UCF student body. PRSA, as the acting Puerto Rican institution at UCF, will look after the educational and social development and progress of the Puerto Rican community in Orlando and Central Florida.

Contact Information

E: ucfprsa@gmail.com





Puerto Rico Research Hub

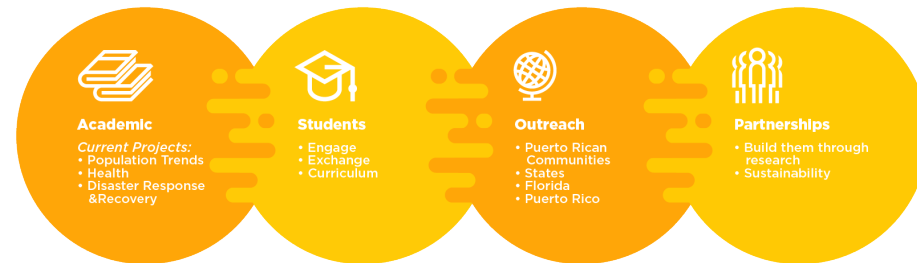
<https://sciences.ucf.edu/puerto-rico-hub>

Purpose

- Investigate, disseminate knowledge and promote creative solutions to pressing issues affecting the Puerto Rican population, its diaspora and surrounding communities.

- Visit our page at:
<https://sciences.ucf.edu/puerto-rico-hub/>

Puerto Rican Research Hub *Research*



Puerto Rico Research Hub

Mitzy Gonzalez, MSW
Program Manager
Coalition of Urban Serving Universities
Association of Public and Land-grant
Universities



Hispanic Serving Institution Federal Definition

Defined by the Higher Education Act as degree-granting institutions with Full-Time Equivalent undergraduate enrollments at least **25% Hispanic students**.

UCF Latino/a/x Undergraduate Student Growth

Year	Total Enrollment (N)	Total Enrollment (%)
2016-2017	14,101	25.3%
2017-2018	14,998	26.3%
2018-2019	16,191	27.5%
2019-2020	16,839	28.3%
2020-2021	17,928	29.1%

HSI National Overview 2018-2019

- Source: *Excelencia in Education*— [available here](#)

Location

State/Location	# HSIs
California	176
Texas	96
Puerto Rico	60
New York	34
Florida	29
Illinois	25
New Mexico	24
New Jersey	19
Arizona	16
Colorado	14
Massachusetts	8
Connecticut	6
Washington	6
Oregon	5
Kansas	4
Nevada	4
Oklahoma	2
Pennsylvania	2
Arkansas	1
District of Columbia	1
Georgia	1
Idaho	1
Indiana	1
Louisiana	1
Maryland	1
Ohio	1
Wisconsin	1
Total (n=27):	539

Sector

Sector	# HSIs	% HSIs
Public, 2-year	231	43%
Private not-for-profit, 4-year or above	152	28%
Public, 4-year or above	140	26%
Private not-for-profit, 2-year	16	3%
Total:	539	100%

Full-Time Equivalent (FTE) Enrollment

FTE Enrollment	# HSIs	% of HSIs
< 500	85	16%
500 - 1,000	43	8%
1,001 - 2,000	76	14%
2,001 - 3,000	49	9%
3,001 - 4,000	47	9%
4,001 - 5,000	34	6%
5,001 - 10,000	102	19%
> 10,000	103	19%
Total:	539	100%

Degree of Urbanization

Type	# HSIs	% of HSIs
City	278	52%
Suburb	175	32%
Town	49	9%
Rural	37	7%
Total:	539	100%

Total FTE Enrollment at HSIs

Race/Ethnicity	Undergraduate
Hispanic/Latino	1,442,110
All students	3,167,698
% Latino:	46%

¹ Summary of Title V of the Higher Education Opportunity Act, as amended in 2008. To be eligible for the "Developing HSIs Program," the law further requires that an HSI have a high enrollment of needy students and low core expenses.

² IPEDS is a system of surveys designed to collect institution-level data from all primary providers of postsecondary education. IPEDS is maintained at the National Center for Education Statistics (NCES), U.S. Department of Education.

Hispanic *Serving* Institutions

What does it mean to be Latinx serving?

Outcomes?

Culture?

Hispanic Serving Matrix

Garcia

Organizational Outcomes for Latinxs	High	Latinx-Producing	Latinx-Serving
	Low	Latinx-Enrolling	Latinx-Enhancing
		Low	High
Organizational Culture Reflects Latinxs			

Figure 1. Typology of Hispanic-Serving Institution organizational identities.

Zoé Colón, MPA
University of Central Florida
Community Partnerships Manager
& Hispanic Community Activist



UCF Latinx Support Initiatives

- HSI initiatives and dedicated staff
- Puerto Rico Research Hub
- DirectConnect and transfer student support
- Latino Faculty & Student Association (LaFASA), PRIDE, Black Faculty & Staff, Multicultural Academic & Support Services (MASS) and Student Associations, among others
- External partnerships with HACU, Excelencia in Education, HCMMO, HHSFMO, Latinos in Action, etc.
- Iniciativa Acción Puertorriqueña, Hispanic Federation, CareerSource Central Florida, UCF Global community education program, Valencia College

Opportunities

- Build partnerships and strategy with Hispanic led organizations across sectors in the region
- Develop a strategy to engage nontraditional learners, career changers and newly arrived immigrants in degree and continuing ed programs
- Leverage new downtown Orlando location, a shared campus with Valencia College
- Develop a vision for working with the Latinx community as a growing “urban” institution
- Leverage resources to help hard hit Latinx population recover from the pandemic’s economic impact

Poll: Which community partner is the primary one your institution engages for Latinx student success?

Questions?

Dr. Fernando Rivera

Professor and Director
UCF Puerto Rico Research Hub
University of Central Florida

Fernando.Rivera@ucf.edu

Mitzy González

Program Manager
Coalition of Urban Serving Universities
Association of Public and Land-Grant Universities

mgonzalez@aplu.org

Zoé Colón

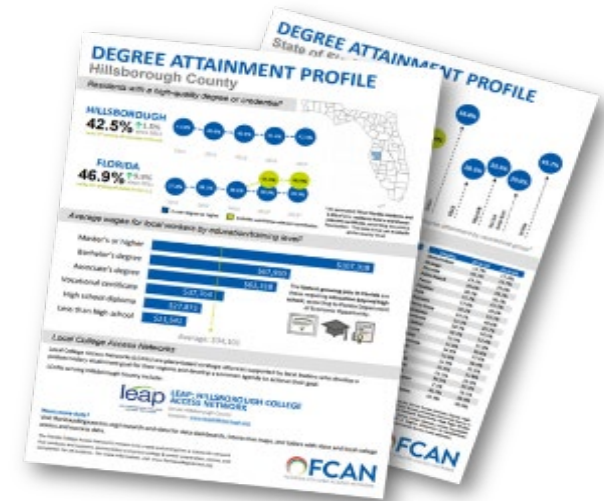
Community Partnerships Manager
Parramore Education &
Innovation District
University of Central Florida

Zoe.Colon@ucf.edu

Learn More:

For upcoming webinars, policy briefs, and promising practices, subscribe at:

FloridaCollegeAccess.org/subscribe



Conclusion

